

October 2024

Dear Parent/Carer/Neighbour,

RE: Redevelopment of Waseley Hills High School

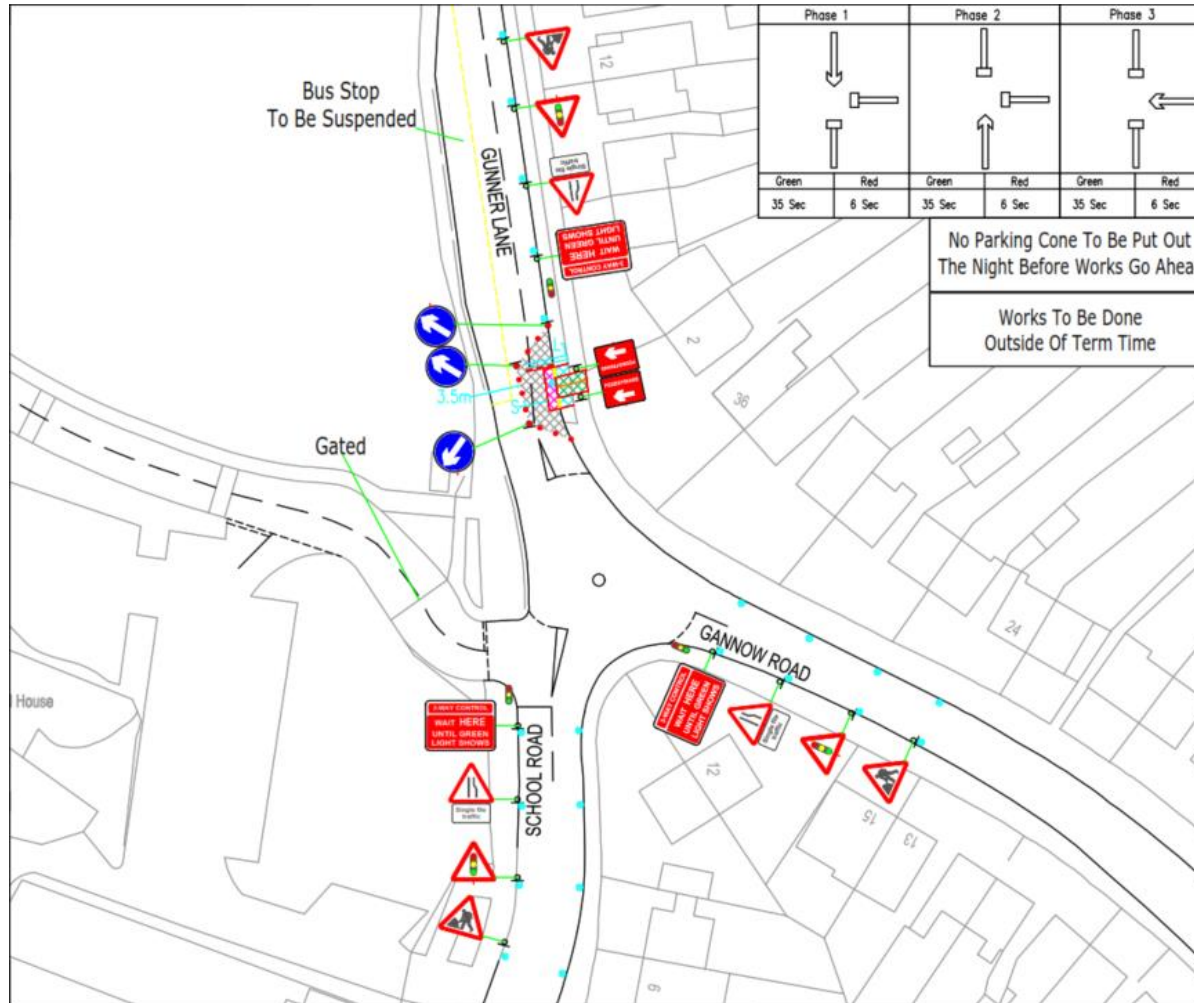
As advised on our last newsletter we will have works happening under a partial road closure over the October half term to get the cable installed to power the new school.

The works will start on Saturday 26 October 2024 and be completed on Sunday 03 November 2024.

We include below the different phasing of the partial closure so that you can understand how access is being provided

If you are accessing the school for any holiday clubs or events the main entrance will be closed but the car park entrance will remain open.

Phase 1





Phase 2



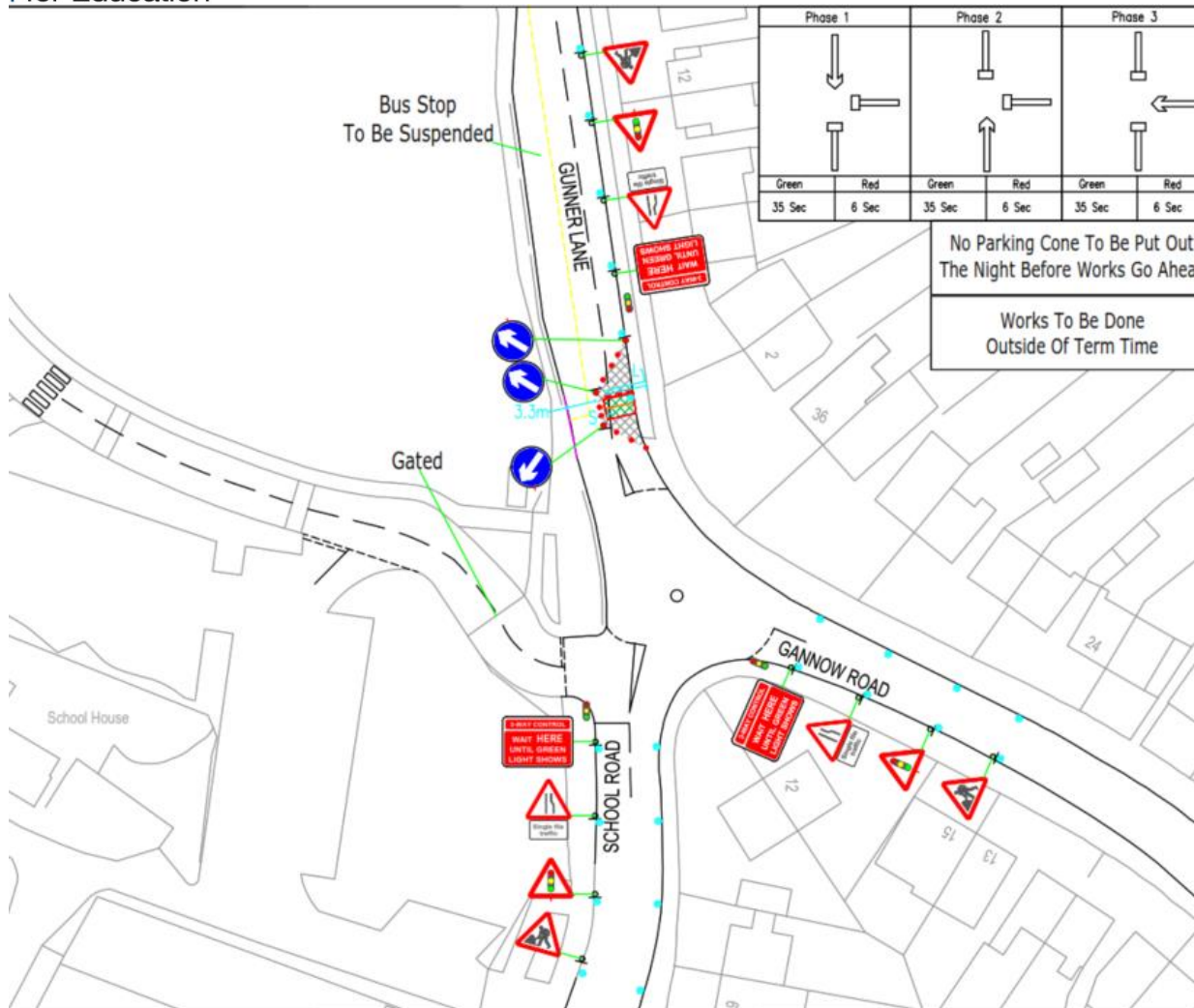
Department for Education



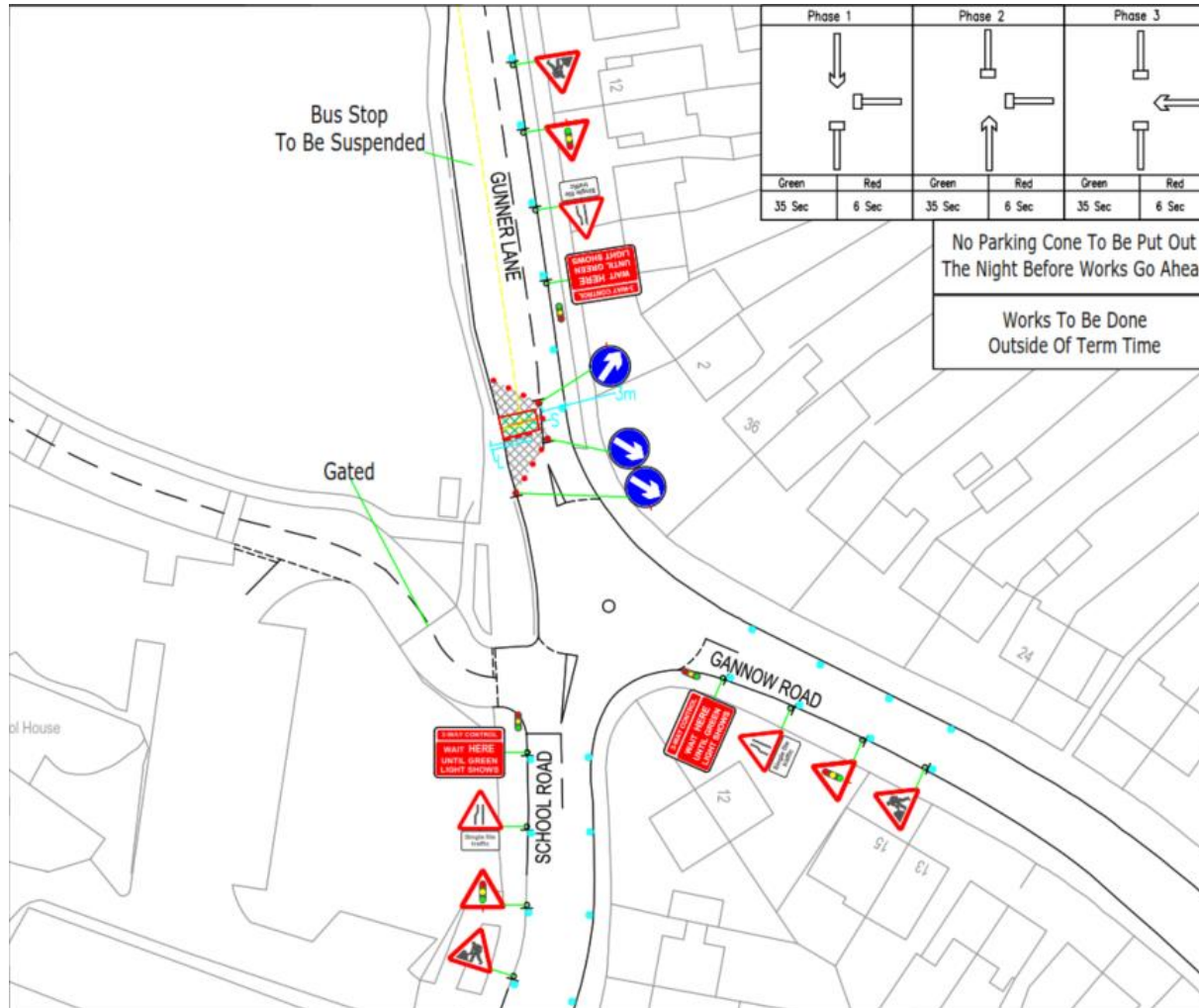
Waseley Hills High School

Aspire, Invest, Respect

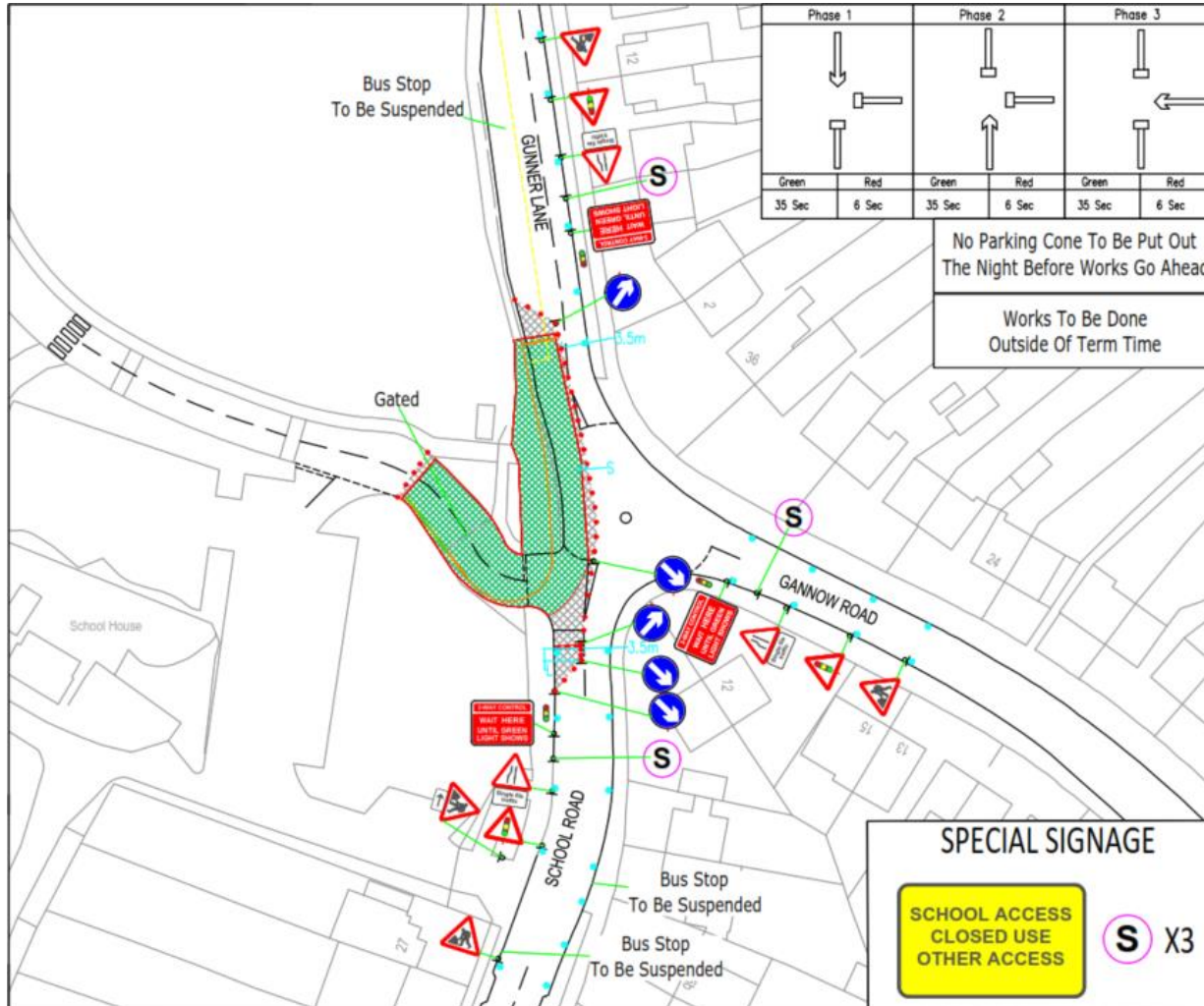
Tilbury Douglas



Phase 3



Phase 4





We would like to reassure you that Tilbury Douglas are Considerate Constructors, we will always seek to complete our work in a way which causes minimal disruption and where disruption cannot be avoided we will communicate with you in advance and put in as many mitigating measures as we can.

If you have any questions or queries throughout the project you have my contact details at the end of the letter.

The scheme is registered with the Considerate Constructors scheme which is independent of Tilbury Douglas and will give you another means of contacting us should you wish to.

We will produce this newsletter on a bimonthly basis to keep you informed.

If you have any queries, please contact the undersigned at;

stuart.1.palmer@tilburydouglas.co.uk

Yours faithfully,

Stuart Palmer
Project Manager

Tilbury Douglas Construction Limited